



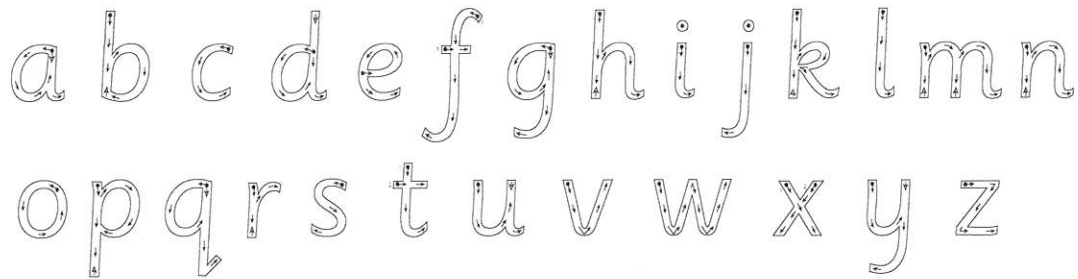
# Messages for Parents

## PENPALS *for Handwriting*

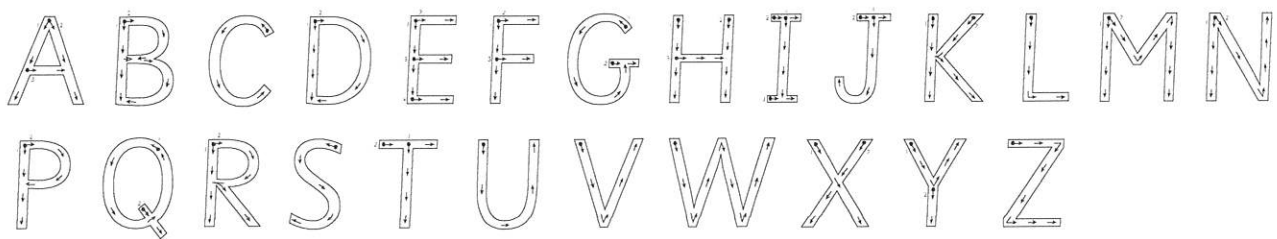
1

During this year, correct letter formation should become an automatic habit. Don't encourage your child to write too small or too quickly. Trying to enforce small handwriting too soon can lead to a very cramped style, which is then difficult to make fluent. At the very end of this year, children will begin to join some pairs of letters within a word.

As a reminder, correct letter formation for lower-case letters is as follows. The arrows show the direction of your child's pencil:



Capital letters are formed as follows:



### Letter families

Your child will still be thinking about the four letter families (similar letter shapes grouped together to help children form letters consistently).

Long-legged giraffe      *l i t u j y*      *ll*      *L I T U J Y*

One-armed robot      *r b n h m k p*      *R B N H M K P*

Curly caterpillar      *c a d o s g q e f*      *ff ss*      *C A D O S G Q E F*

Zig-zag monster      *z v w x*      *zz*      *Z V W X*

Letter combinations      *ck qu*      *ai igh oo*      *ee oa ow*      *ch wh*

### Joins

These four joins are introduced at the end of the year, so if your child is keen to start joining, then these are a good place to start.

Diagonal join to ascender      *ch*      Diagonal join, no ascender      *ai*

Horizontal join to ascender      *wh*      Horizontal join, no ascender      *ow*

