



Progression of knowledge & skills in Geography

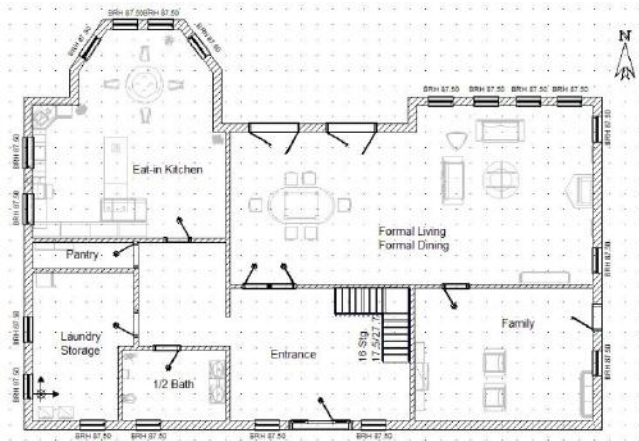
		Year 1	Year 2	Year 3	Year 4	Year 5	Year 6
Locational Knowledge	Locating	Name, locate & identify 4 countries & capital cities of UK and surrounding seas Identify characteristics of 4 countries	Name and locate 7 continents and 5 oceans Identify the equator & North & South poles	Locate the main countries of Europe inc. Russia. Identify capital cities of Europe. Identify the position of Equator, N. and S. Hemisphere & Tropics of Cancer and Capricorn.	On a world map, locate areas environmental regions, countries & major cities in N & S America.	Locate and name the main counties, key topographical features and cities in England.	Locate and name boroughs of London
	Place knowledge	Describing	Study human & geographical features of local area	Study human & geographical features of small area in non-European country	Study human & geographical features of small area in European country	Study human & geographical features of small area in N America & S America	Study human & geographical features of different areas in UK
Comparing		Begin to make simple comparisons of human & physical features of local area & other contrasting non-European countries	Identify similarities & differences between human & physical features between local area & small area of non-European country	Compare a region of the UK with a region in Europe, eg. local hilly area with a flat one or under sea level.	Compare a region of the UK with a region in N America & S America with distinct differences	Compare 2 different regions in UK rural/urban.	Compare London in different time periods, exploring how land use has changed over time
Human & Physical Geography	Identifying patterns	Identify seasonal weather patterns in the UK	Locate hot and cold areas of the world in relation to the Equator and the North & South Poles Identify daily weather patterns using fieldwork equipment	Understand the significance of the Tropics of Cancer & Capricorn	Understand the significance of Arctic & Antarctic circles	Identify the position and significance of latitude/longitude and the Greenwich Meridian.	Understand the significance of time zones
	Understanding	Understand seasonal weather patterns are different around the world and how they can vary from year to year	Understand how weather patterns relate to proximity to Equator	Understand key aspects of mountains & volcanoes Understand types of settlements & land use in Early Britain Understand how economic activity including trade links impacted on physical landscape.	Understand key aspects of earthquakes & climate zones. Explore distribution of natural resources eg key rivers & vegetation belts/biomes (S America) & minerals (N America) in relation to settlement sites. Investigate types of settlements in Viking, Saxon Britain.	Understand key aspects of water cycle & rivers. Explore types of settlements & land use near rivers Investigate types of settlements in modern Britain: villages, towns, cities. Understand how settlements & land use have changed over time	Explore distribution of natural resources eg energy & food Understand how settlements & land use has changed over time
	Vocabulary	Use basic geographical vocab to describe human & physical features; city, town, village, farm, house, shop, beach, forest, mountain	Use more complex geographical vocab to describe human & physical features; harbour, port, coast, valley, vegetation, cliff, soil	Use range of topic-specific geographical terms related to mountains, volcanoes	Use range of topic-specific geographical terms related to earthquakes, biomes & vegetation belts and climate zones	Use range of topic-specific geographical terms related to rivers	Use range of topic-specific geographical terms related to energy
Geographical skills	Geographical enquiry	Ask geographical questions Use simple observational skills to study the school grounds	Ask and answer simple geographical questions Use simple observational skills to study the school grounds and the surrounding area Use fieldwork equipment to measure weather eg rain gauge, outdoor thermometers	Follow a teacher-led geographical enquiry eg which is the busiest local road? Present simple results Draw simple conclusions Use fieldwork equipment eg trundle wheels, sound level monitors & soil test kits	Plan a class geographical enquiry Communicate findings in ways appropriate to the task Analyse evidence and draw conclusions	Plan steps & strategies for a group geographical enquiry Communicate findings in ways appropriate for the audience	Use maps, charts & data to support decision making about geographical issues eg a new bypass
	Using maps	Use a simple picture map to locate things around school Recognise that a map is a picture of a place	Follow a route on a map within school Use a plan view	Follow a route on a map within local area Use scales on maps to calculate straight line distances	Follow a route on a map on a trip Use letter/number coordinates to locate features on a map	Plan a route on a local map Use thematic maps to find out about features of places Select a map for a purpose	Follow a short route on an OS map Plan a route for a longer journey (school journey)



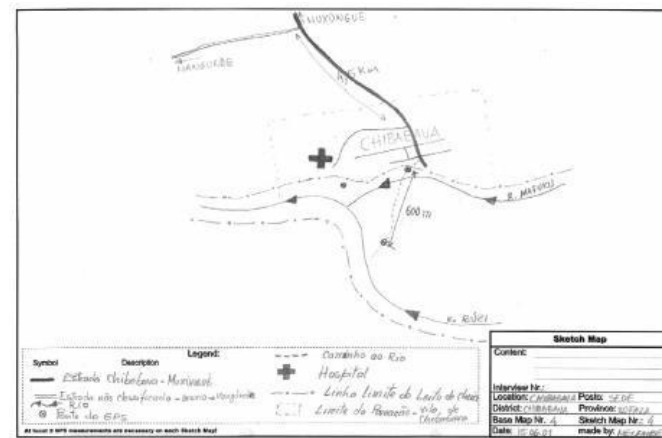
		Use an infant atlas to locate UK	Use an infant atlas to locate 7 continents & 5 oceans and countries studied	Use letter/number coordinates to locate features on a map		Use 4 figure coordinates to locate features on a map	Use 4 figure coordinates to locate features on a map
	Scale	Use relative distance vocabulary – bigger, smaller	Begin to spatially match places – recognise UK on small & large scale maps	Begin to match boundaries (find same boundary of a country on different scale maps)	Find & recognise places on maps of different scales Measure straight line distances on a plan	Use a scale to measure straight line distances on maps & plans	Use a scale to measure curved line distances on maps & plans using string
	Direction	Follow directions – up, down, left, right, forwards, backwards	Follow directions - North, South, East, West	Use 4 compass points to follow & give directions	Use 4 compass points to follow & give directions Use 8 compass points to follow directions	Use 6 figure grid references	Use latitude & longitude on atlas maps
Communication	Map-making	Draw picture maps of imaginary places and settings from stories. Draw simple maps of local area in straight line eg parade of shops. Use own symbols on imaginary map	Draw sketch maps of real or imaginary places. Use aerial photographs to add detail Begin to understand need for a key. Use class-agreed symbols to make a simple key.	Draw sketch maps of short routes experienced, with features in correct order. Try to make simple scale drawing Know why a key is needed. Create own key.	Draw sketch maps of short routes experienced, with features in correct order. Make simple scale drawing Know why a key is needed. Use OS symbols in key.	Draw plan view maps with some accuracy. Draw sketch maps on squared paper to support scale. Use atlas symbols in key.	Draw thematic maps based on own data. Draw plan maps of increasing complexity. Draw sketch maps, paying increasing attention to scale/distance.



Plan view:



Sketch map:



Thematic map:

